

Sunday 18 Jan 2026

Issued by the Vice Deanship of Research Chairs

**The Climate Change, Environmental Development and Vegetation Cover Chair, with the support of the Environment Fund, organizes the "Research Excellence Award in Environmental Development"**

Under the patronage of His Excellency the Vice President of King Saud University for Graduate Studies and Scientific Research, Prof. Yazeed Al-Sheikh, and in the presence of the Chief Executive Officer of the Environment Fund, Mr. Muneer Al-Sahli, the ceremony of the Research Excellence Award in Environmental Development was held.

The award is organized by the Climate Change, Environmental Development and Vegetation Cover Research Chair with support of the Environment Fund as part of national efforts to enhance environmental scientific research and stimulate innovation in this vital field.

Dr. Asmaa Al-Huqail, Supervisor of the Research Chair explained that the award aims to support and encourage researchers and specialists to present high-quality scientific research that contributes to environmental development, conservation of vegetation cover, and addressing challenges of climate change through innovative, research-based scientific solutions, in alignment with the goals of sustainable development and Saudi Vision 2030.

**The Research Chair of Voice, Swallowing and Communication Disorder organizes a training workshop entitled "The Power of Voice"**

The Medical Club at King Saud University organized a training workshop titled "The Power of Voice" in collaboration with the Research Chair of Voice, Swallowing, and Communication Disorders. The workshop was presented by Prof. Khalid Al-Maliki, Supervisor of the Research Chair, and was held as part of the club's developmental programs aimed at enhancing students' professional skills. The workshop attracted over 10 participants, including medical students, and focused on developing effective public speaking and communication skills, boosting professional confidence, particularly in academic and clinical settings such as OSCEs. Prof. Al-Maliki addressed key topics including voice and breathing control, body language, professional presence, and clear medical communication, supported by practical exercises and interactive activities.

This initiative reflects the Medical Club's complementary role, in collaboration with specialized research chairs, in supporting students' non-cognitive skills and preparing competent medical professionals. In conclusion, the Medical Club expressed its appreciation to Prof. Khalid Al-Maliki for his valuable contribution and engaging teaching style.

**The Vice Deanship of Research Chairs Participates in the Exhibition of the 5th Scientific Journals Forum under the Theme "Innovation and Impact in Scientific Publishing – New Horizons"**

His Excellency, the Vice President of the University for Graduate Studies and Scientific Research, Professor Dr. Yazeed Al-Sheikh, inaugurated the Fifth Scientific Journals Forum, held under the theme "Innovation and Impact in Scientific Publishing – New Horizons." The forum was organized by the Scientific Journals Administration within the Deanship of Graduate Studies and Scientific Research, with the participation of distinguished academic and research institutions.

The Vice Deanship pavilion at the accompanying exhibition attracted notable attention, highlighting the pivotal role of research chairs in supporting the scientific publishing ecosystem and enhancing the quality of research outputs. During his tour, His Excellency was briefed on the key achievements of the research chairs and their contribution to advancing applied research, knowledge innovation, and research partnerships at both national and international levels.

This participation reaffirms the University's commitment to developing the scientific publishing system, supporting specialized scientific journals, and strengthening integration between research chairs and academic journals, thereby enhancing the University's scientific and knowledge impact and contributing to the goals of Saudi Vision 2030 in research and innovation.

**The Chair of Biomarkers of Chronic Diseases signs a Memorandum of Understanding with the Chronic Diseases Association in Al-Kharj**

The Chair of Biomarkers for Chronic Diseases signed a memorandum of understanding with the Chronic Diseases Association in Al-Kharj to enhance research and community collaboration and activate strategic partnerships supporting scientific and health efforts on Chronic Diseases. The MOU aims to unify efforts in applied scientific research, exchange expertise and knowledge, and develop awareness initiatives and programs that promote health awareness and strengthen prevention and early detection concepts. It also includes cooperation in conducting specialized studies on biomarkers of chronic diseases, utilizing research outcomes to support health programs, and organizing joint conferences, seminars, workshops, and training courses. Both parties emphasized that this partnership represents a strategic step toward linking scientific research with community needs and transforming research outcomes into practical applications that improve quality of life, reduce the prevalence of



chronic diseases, and strengthen collaboration between academic institutions and the non-profit sector. This initiative aligns with King Saud University's efforts to support scientific research and community service in line with Saudi Vision 2030 goals in health, quality of life, research, and innovation.

**Supervisor of Sheikh Abdullah Al-Rashid Chair for Earth Sciences and Remote Sensing Research, wins Al-Marai Award for Scientific Innovation**

Dr. Fahd Khudair Al-Shahri, Associate Professor at King Saud University and Supervisor of the Sheikh Abdullah Al-Rashid Chair for Earth Sciences and Remote Sensing Research, achieved a significant national milestone by winning the Almarai National Scientific Innovation Award, highlighting excellence in scientific research aligned with the Kingdom's development priorities.

The award-winning research applies advanced artificial intelligence techniques, including



machine learning, deep learning, and explainable AI, to develop predictive models that support groundwater management in arid and semi-arid regions. This innovative approach enhances the accuracy, transparency, and reliability of water-related decision-making, contributing to more efficient water planning.

Dr. Al-Shahri noted that this achievement reflects strong institutional support for research and the vital role of research chairs in producing applied knowledge with societal impact. The work supports Saudi Vision 2030, particularly in environmental sustainability, water security, and technological innovation, and reinforces King Saud University's leadership in the national research and innovation ecosystem.

**Pioneering National Study Highlights the Impact of Clinical Genomics in Diagnosis and Treatment**

A national research team, led by the Chair of Epidemiology and Public Health in collaboration with King Faisal Specialist Hospital and hospitals across Saudi Arabia, conducted a pioneering study demonstrating the growing role of clinical genomics in improving diagnostic accuracy and patient outcomes.

The study showed how genetic testing enables early precise diagnoses, supports evidence-based treatment decisions, and increases access to targeted therapies, reinforcing clinical genomics as a key pillar of modern precision medicine. This work exemplifies successful national collaboration between research and healthcare institutions, producing results with both regional

and global significance.

Professor Farjah Hassan Al-Qahtani, Supervisor of the Chair, noted that the study reflects the Kingdom's progress in health research and underscores the importance of integrating clinical genomics into practice, in line with Saudi Vision 2030 goals for healthcare advancement and innovation.

This achievement represents a qualitative advancement in the health research and development system and demonstrates the pivotal role of research chairs in generating applied scientific knowledge with a direct impact on public health.

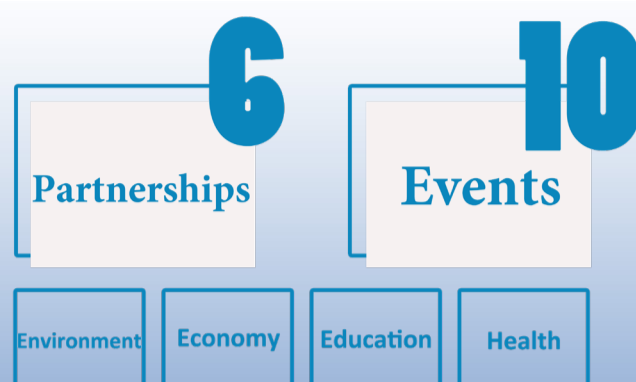
**The Chair of Research in Climate Change Participates in the Innovation Driven Water Sustainability Conference**

The Chair of Research in Climate Change, Environmental Development, and Vegetation Cover participated in the Innovation Driven Water Sustainability Conference (IDWS 2025), organized by the Saudi Water Authority from December 2025, 10-8, in Jeddah. The Chair's supervisor, Dr. Asmaa Al-Huqail, along with members of the Chair, presented scientific posters on nanotechnology for water treatment to enhance crop growth.



The presented research addressed eco-friendly green synthesis methods to manufacture zinc oxide nanoparticles, highlighting their physicochemical properties and photocatalytic activity, as well as their applications in the sustainable treatment of wastewater and their use in improving the growth of certain crop species. This work confirms the effectiveness of this sustainable approach in water treatment and in enhancing agricultural productivity.

## Research Chairs Strengthen Their Community Impact in 2025



### Introduction

In 2025, Research Chairs implemented a wide range of community initiatives aimed at strengthening their role in serving society and connecting research outcomes with real community needs. These efforts included 10 community events and 6 partnerships in health, education, economic, and environmental fields, targeting various segments of society.

### International Scientific Partnerships

One of the key initiatives was the organization of the 13th Course on Pediatric Gastroenterology, Hepatology, and Nutrition by the Celiac Disease Research Chair, held online in January 2025. The course featured distinguished international speakers from leading institutions such as Harvard University, the University of Brisbane, Great Ormond Street Hospital, and King's College London, alongside national and Gulf medical institutions. This reflected the strong scientific and community impact of the initiative.

### Health promotion and quality of life

Health initiatives were the most prominent community activities, including: "The Importance of Vaccines in Protecting Community" lecture organized by Infectious Disease Vaccines Research Chair at Al-Joudah Schools, as well as the awareness campaign "Obesity: The Disease of the Modern Times," implemented by the Women's Health Research Chair in collaboration with Bunyan Association and Ethraa Knowledge Association.

A lecture by The Women's Health Research Chair entitled: "Adolescence in Girls". In addition to the online lecture "Your Health After Forty," held in collaboration with the Munirah Al-Mulhim Library at the Abdulrahman Al-Sudairy Cultural Center.

In caring for older adults, the campaign "Albarakah Feekum": enhancing the quality of life of older person" was organized by the Prince Faisal bin Bandar Research Chair for Elderly Research, funded by Kebar Association, and implemented in collaboration with the Family Medicine Club at the College of Medicine.



"Albarakah Feekum" campaign to Enhance the Quality of Life of elderly



"Adolescence in Girls" Lecture

### Awareness and Education



"The Role of Chemistry in Environmental Protection" Lecture

The Advanced Materials Research Chair presented a lecture entitled "The Role of Chemistry in Environmental Protection," in collaboration with the Cultural and Social Club at the College of Food and Agriculture Sciences, aiming to promote environmental awareness and support quality education.

A specialized workshop titled "Artificial Intelligence in Scientific Research: Modern Publishing Policies of Global Publishing Houses" was also held in collaboration with the Artificial Intelligence Laboratory at the College of Medicine. The workshop was presented by the Supervisor of the Research Chair for Voice, Swallowing, and Communication Disorders and focused on enhancing researchers' skills in modern scientific publishing.

### Capacity Building and Professional Development

Sheikh Abdullah Al-Rashid Chair for Earth Sciences and Remote Sensing Research organized a two-week training program for the staff of the geological survey authority, focusing on applied and specialized training to support decent work and economic growth.



Training program for staff of the geological survey authority



Health Awareness workshop in Alkharj schools

Additionally, the Biomarkers of Chronic Diseases Research Chair conducted awareness workshops in schools in Al-Kharj Governorate, in partnership with the Chronic Diseases Association and under the patronage of the Riyadh Region

Education Administration, aiming to enhance health awareness among students.

### Organized and Measurable Community Impact

All initiatives implemented in 2025 reflect a structured and organized approach to community engagement, including careful planning, coordination with partner organizations, promotion through social media, and well-prepared content.

These efforts highlight the continued role of Research Chairs as active knowledge partners, contributing to awareness raising, capacity building, and the achievement of sustainable development goals, within the framework of a Knowledge Society.



## January International Days

### World Braille Day - January 4



#### Braille: a True turning point in the integration of persons with visual disabilities

World Braille Day represents a global occasion to affirm the right of persons with visual disabilities to equitable access to knowledge and information, as a fundamental human right.

Braille is more than just a method of reading and writing; it is a tool of empowerment that has contributed to enhancing the independence of millions around the world, opening doors to education, employment, and active social participation. Braille has marked a turning point in the integration of persons with visual disabilities across various spheres of life.

On this occasion, the responsibility of educational, media, and cultural institutions is reaffirmed in supporting the use of Braille, advancing its applications, and integrating it into modern digital systems, ensuring uninterrupted access to knowledge and keeping pace with rapid technological transformations.

Investing in Braille is an investment in people and in building a more inclusive and just society, one in which opportunities for learning and knowledge are available to all without exception.

May Braille always remain present, and may every reader be more empowered and closer to a future worthy of their aspirations.

Dr. Manal Al-Juaid

Researcher at the Dr. Ibrahim Al-Muhanna Chair for Energy and Specialized Media

### International Day of Clean Energy - January 26



#### The Renewable Energy Utilization Research Chair at King Saud University, represented by Professor Dr. Ahmed Al-Najjar, participates in the World Clean Energy Day with the following message:

Solar energy is among the most significant sources of clean and renewable energy.

It involves converting sunlight directly into electricity through solar panels (photovoltaic cells), or into thermal energy for water heating and steam generation. It represents a fundamental foundation for the future for several reasons:

- An inexhaustible renewable source: It relies on the sun, an energy source that does not run out.
- Environmentally friendly: It produces no greenhouse gas emissions or pollutants during operation
- Local and secure: It reduces dependence on fossil fuel imports and enhances national energy security.
- Accessible to all: It can be deployed on a wide scale, from rooftop residential systems to large-scale power plants feeding the grid.
- A driver of development: It creates new job opportunities in manufacturing, installation, and maintenance.

Third-generation solar cells aim to overcome the limitations of earlier generations by achieving high efficiencies at low production costs while using new and flexible materials. Although most of these technologies are still in the research and development stage, some—such as perovskite solar cells—are approaching commercialization, representing a potential transformation in the form and spread of solar energy over the coming decade, especially as challenges related to stability and durability are addressed.

Investing in solar energy and accelerating the adoption of advanced technologies is a practical step toward achieving the goals of World Clean Energy Day and aligns closely with Saudi Vision 2030, which emphasizes sustainable development and a diversified economy. In this context, World Clean Energy Day serves as a catalyst for change, turning awareness into action and innovation into real-world solutions, and highlighting how today’s energy choices shape a more sustainable and prosperous future.

### Scientific Inspiring Quote

Neil Degrasse Tyson

“Science is a way of thinking much more than it is a body of knowledge”

As:  
science goes beyond memorization; it is a critical approach to understanding the world.

Why?  
It encourages the adoption of scientific thinking in everyday life, not just in the laboratory.

### The Mistake That Changed the World



#### Invention of plastic (Leo Baekeland – 1907)

Mistake: He was looking for a substitute for varnish (electrical insulator), but mixed the ingredients in different proportions than intended.

Result: He obtained a completely new material, strong and light—the first type of industrial plastic, Bakelite.

Impact: It opened the door to the manufacture of plastics in all their forms, from electronics to automobiles.

#### The accidental cell phone (Martin Cooper – 1973)

Mistake: A Motorola engineer used a prototype to experiment handheld cellular mobile phone

Result: The experiment proved successful, and the cell phone revolution took off.

Impact: It radically changed the way the world communicates.

#### Internet programming error (Tim Berners-Lee – 1989)

Mistake: He only wanted to organize files on his computer at CERN, but he built a simple “text link” system that led him to design the web itself.

Result: The emergence of the internet as we know it.

Impact: It changed all areas of human life.

## A study by SABIC Psychological Health Research & Applications Chair Shows "Use and Perceptions of Mobile Mental Health Applications Among Healthcare Workers in Saudi Arabia"

The use and perceptions of smartphone-based mental health applications (MH-Apps) in Saudi Arabia require exploration. This study investigated MH-App use among Saudi Arabian healthcare workers), including psychiatrists, psychologists, and family medicine physicians. It also assessed HCWs' interest in and willingness to integrate these apps into their practices, as well as their cognitive flexibility and its relationship with their attitudes and app use. This cross-sectional study involved 386 participants recruited using convenience and snowball sampling. The Cognitive Flexibility Scale (CFS) was used to assess cognitive flexibility. The results showed that 33.2% of HCWs downloaded MH-Apps, with 67.9 % considering them somewhat

beneficial. However, most had not yet tried them. Only 7% of HCWs strongly agreed that these apps are evidence-based. Concerns about using these apps in their practices were reported by 36.5% of HCWs, with the most common concern being the lack of evidence-based support. The primary reason for downloading MH-Apps for personal use was to improve mental well-being, whereas patient-related use was psychoeducation. Furthermore, 27.5% of HCWs recommended MH-Apps to their patients, with old age, women, and psychiatrists/psychologists more likely to recommend them. Higher CFS scores were more strongly associated with older HCWs, those who had ever recommended MH-Apps, and those who used the apps. Saudi



Arabian HCWs should be encouraged to use and recommend MH-Apps, with more evidence-based research needed to address concerns. Further research on cognitive flexibility's implications for clinical practice is also warranted.

## Book Publications

## Qualitative Research in Media Studies



The Chair of Dr. Ibrahim Al-Muhanna for Energy and Specialized Media published a book titled "Qualitative Research in Media Studies" by Prof. Mutlaq Saud Al-Mutairi.

The contemporary world is experiencing a period of rapid digital transformation since the beginning of the new millennium, accompanied by fast and dramatic political changes. In light of these developments, media researchers face difficulties keeping pace with such transformations, especially due to the lack of a modern theoretical framework for studying the impact of media. As a result, many researchers continue to rely on traditional media theories that date back to the mid-twentieth century.

Qualitative research focuses on exploring social phenomena within their natural settings by collecting direct information from real-life contexts. This type of research is concerned with understanding the meanings of people's experiences and daily lives, rather than merely examining relationships between variables or measuring the effect of one variable on another. It seeks a deeper understanding of the meanings that individuals create and share within society. Qualitative researchers use various methods to ensure the accuracy and credibility of data, such as

prolonged engagement, continuous observation, and relying on multiple sources of information. Ultimately, the goal of qualitative research is to describe reality as it is and to understand the nature of social and cultural interactions among research participants.

The text explains that qualitative research does not rely on predefined hypotheses or fixed questions; rather, it aims to uncover social phenomena and problems without seeking generalization or making judgments.

The importance of the book lies in highlighting the role of qualitative research in developing media studies and freeing them from theoretical constraints, while stressing the interdisciplinary nature of media studies.



## Work Team

**Editor in Chief**  
Nada Alhusain

**Editorial Team**  
Sultan Albluwi – Sami Alburaidi  
Sultan Alamri – Manal Alhamdan

**Design & Direction**  
Lulwah Aldraiheem

We invite you to follow our official account on the X



Vice Deanship of Research Chairs  
Deanship of Scientific Research  
011-4696800  
chairs@ksu.edu.sa  
@researchchairs